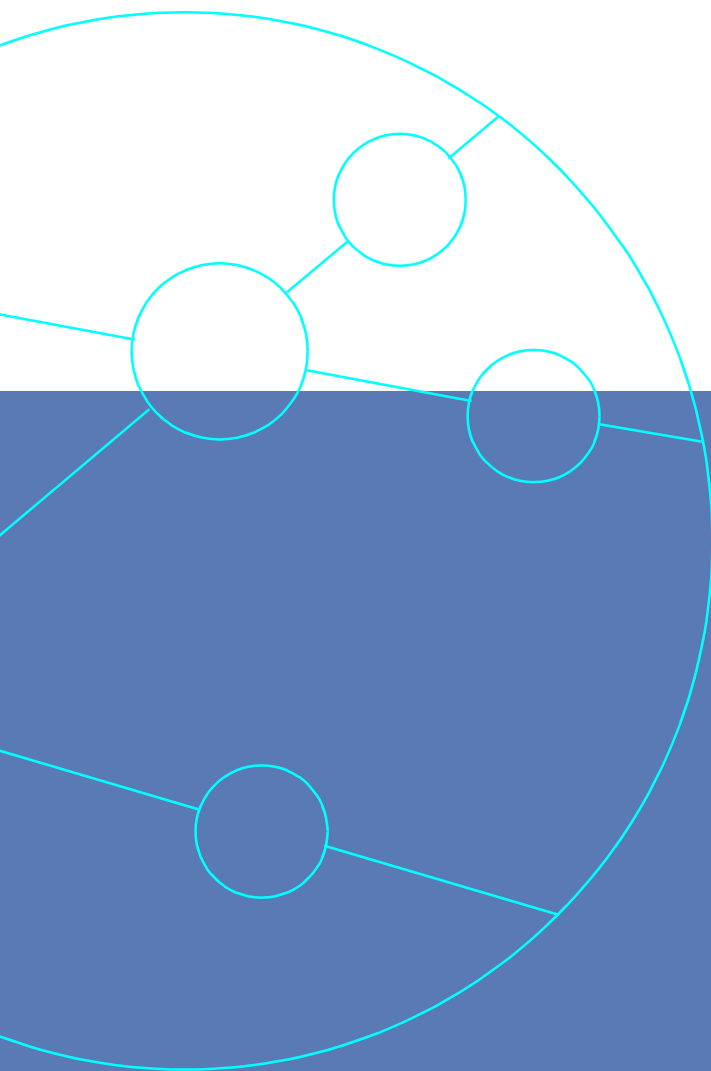




Testing and Verifying Remote Office Service



Application Note ANATNG-03



Testing the World's Digital Networks

TrendCommunications

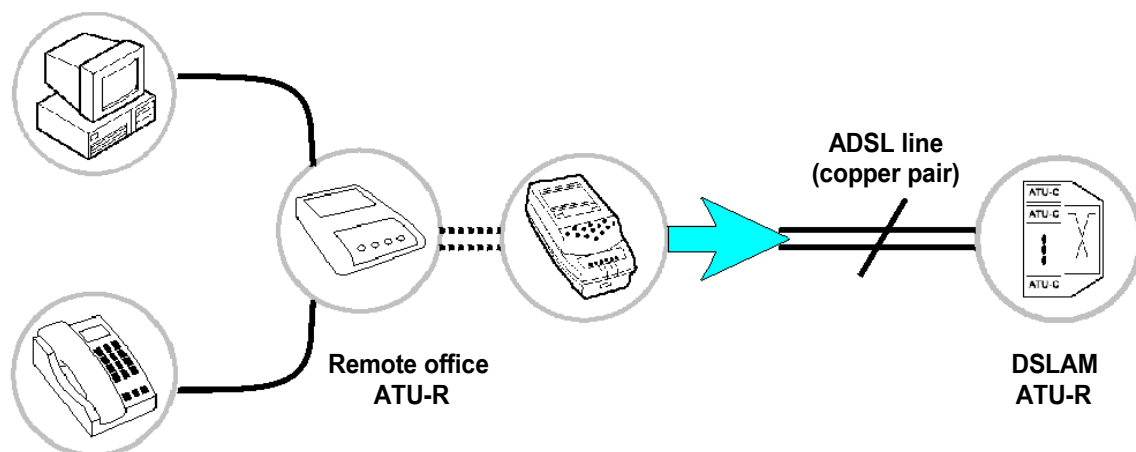
TESTING AND VERIFYING REMOTE OFFICE SERVICE

The test strategy of newly installed or commissioned links in different technologies, especially in broadband technologies, should be to prevent any problems when the customer's equipment is used for the first time. Untested links can show the following faults, for example:

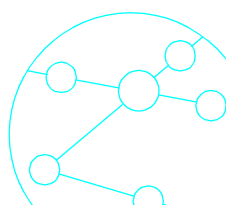
- No synchronisation of the modem
- No match of the promised Upstream and Downstream parameters

The time and cost involved solving a problem after installation will definitely be higher when compared to the time spent testing during the installation. Therefore initial tests of ADSL links during installation and commissioning must be able to prove the availability of the service and analyse possible problems.

A passed test, confirmed by a test report with all relevant data and results, will provide confidence in the service for both the customer and the service and/or network provider.



Aurora Tango can be used to emulate the ADSL remote office modem to terminate the link. Aurora Tango's easy-to-use graphical user interface, one-button test and automatic test functionality enables users, regardless of their previous test experience, to test the link and display pass/fail results, or more detailed information.



During the training sequence to the DSLAM Aurora Tango's complete test functionality provides:

- trace functionality of the events
- Graphical display of carrier tones analysis
- Graphical display of noise
- the achieved upstream and downstream parameters
- Error counter

The training sequence to the DSLAM with trace functionality of the events, analysis of carrier tones and/or noise displayed with graphs and the achieved upstream and downstream parameters are part of the complete test functionality of Aurora Tango.

The xDSL test is considered to have been passed if it reaches Showtime/Datamode and meets the configured maximum and minimum settings on the threshold options (xDSL statistics parameters) you have selected.

On the Pass/Fail Setup screen you can select and configure the threshold options you want to use for the test. You can enter the maximum and minimum settings or you can use the default for each option.



TrendCommunications

Trend Communications Ltd
Knaves Beech Estate
Loudwater, High Wycombe
Bucks HP10 9QZ UK
www.trendcomms.com
info@trendcomms.com

Trend Communications SL
Pujades, 60
08005 Barcelona
(Spain)

International: +44 1628 524977
España:..... 93 300 3313
Deutschland: 089 32 30 09 11
US: 256 461 0790

UK:..... 01628 524977
France: 01 69 35 54 70
India:..... 22 8597 463/4

