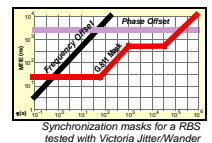
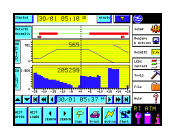
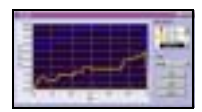
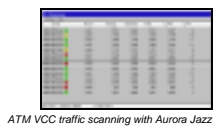
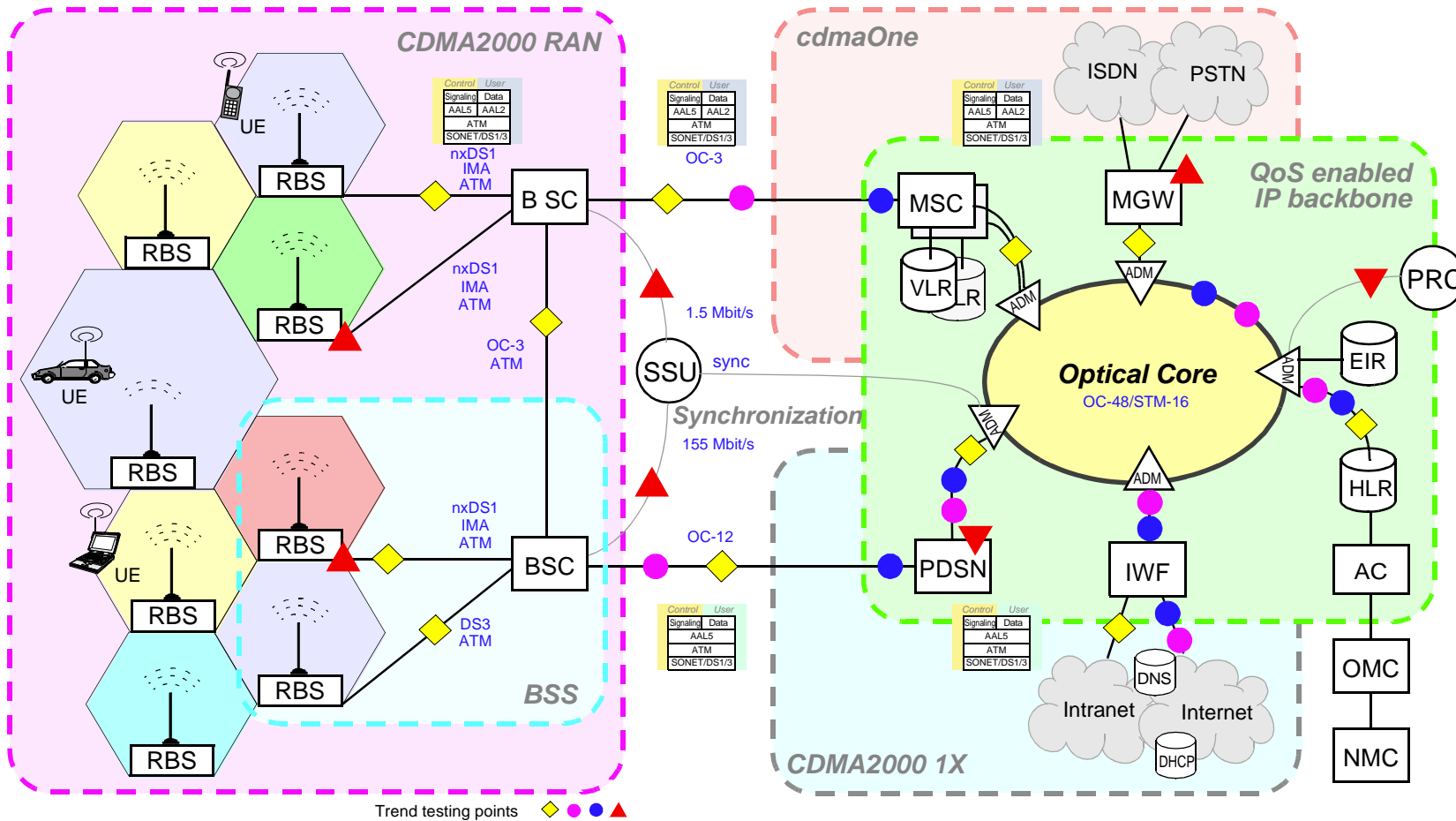








Trend Communications multilayer test solutions for 3G/CDMA2000



Victoria Combo	Victoria OC-48 Plus	Victoria Jitter/Wander	Aurora Jazz
			
<p>A universal test platform supporting line rates up to 10 Gbit/s for SONET, SDH, DS1/3 and PDH networks. Modular, stackable, expandable and designed to work in a wide range of applications. TCP/IP connectivity provides the ability to control Victoria Combo from anywhere, via any network and makes it simple to integrate into centralized testing environments. Also supports Ethernet, TCP/IP, wireless and RS-232 connectivity. All you need for the installation, bringing-into-service and maintenance of a wide variety of line types.</p>	<p>A touch-screen, handheld tester which includes all electrical and optical ANSI & ETSI interfaces up to 2.5 Gbit/s, with functions such as TCM, APS, M/N alarms, G.783 sequences, frequency deviation and Nx56 and Nx64kbit/s tests at DS1 and E1 levels. It can be remotely managed through a TCP/IP network. Also includes ATM testing features for QoS, OAM flows, IP Ping, AAL1/2/3/4/5 analysis and generation, and TCP/UDP/IP over ATM traffic analysis, up to OC-3 rates.</p>	<p>This instrument is built on the Victoria SONET/SDH platform, adding real-time analysis and generation of Jitter and Wander according to O.171 and O.172. It is able to generate arbitrary modulations with graphical results by means of tolerance and transfer masks. Ideal for both transmission and synchronization networks. Supports all interfaces up to 155 Mbit/s.</p>	<p>A powerful and flexible tool for testing physical, ATM and IP layer operation during the commissioning, maintenance and troubleshooting of ATM circuits. Provides connection to DS1, DS3, OC-3/STM-1, OC-12/STM-4, E1, E3 and ATM25 links. Physical and cell BER testing is provided. Advanced features, such as AAL, OAM, QoS, SVC and IP Ping over ATM, higher layer protocol analysis and remote control are also available.</p>

- Acronyms**
- AC: Authentication Center
 - BSC: Base Station Controller
 - BSS: Base Station Subsystem
 - DHCP: Dynamic Host Configuration Protocol
 - DNS: Domain Name System
 - EIR: Equipment Identification Register
 - IWF: Interworking Function
 - GMSC: Gateway Mobile Switching Center
 - HLR: Home Location Register
 - MSC: Mobile Switching Center
 - MGW: Media Gateway
 - NMC: Network Management Center
 - OMC: Operations & Maintenance Center
 - PDSN: Packet Data Service Node
 - PRC: Primary Reference Clock
 - RAN: Radio Access Network
 - RBS: Radio Base Station
 - SSU: Synchronization Supply Unit
 - UE: User Equipment
 - VLR: Visitor Location Register