

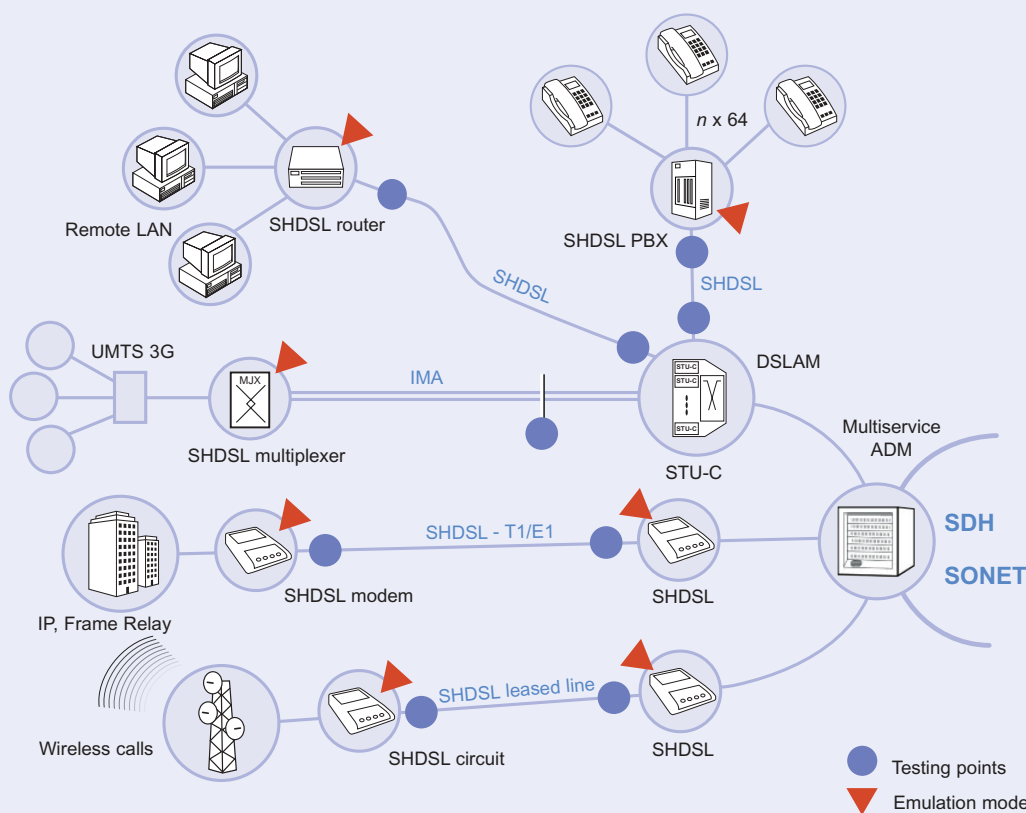
Aurora Tango SHDSL

Define Your Own Test Scenario



Symmetric High-Speed Digital Subscriber Line (SHDSL) is the preferred solution for professional, high-quality access. SHDSL is well suited for applications with symmetrical bandwidth requirements, such as high-speed bidirectional data, voice and full duplex video transmission. SHDSL presents such features as rate adaptation, longer distances, low power, and high compatibility with other signals transported on the wired pair.

Aurora Tango is the most successful platform in the market for installation, troubleshooting, and SLA verification. The Aurora Tango SHDSL module combines performance and efficiency in a light and user-friendly test set.



- Quick SHDSL installation and verification
- Additional modules for ADSL/POTS, ADSL/ISDN and ISDN
- One or two-pair operation
- STU-R and STU-C operation
- PPPoA and PPPoE
- Trace Route and IP ping over PPP
- Embedded Operations Channel (EOC) messages
- IP address resolution
- Service parameters such as data rate SNR, SNM, attenuation
- All you need for installation and maintenance
- Bluetooth™ connectivity

Service Verification

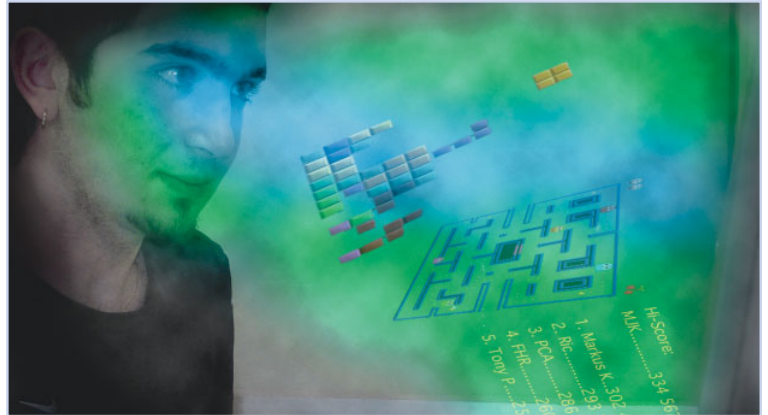
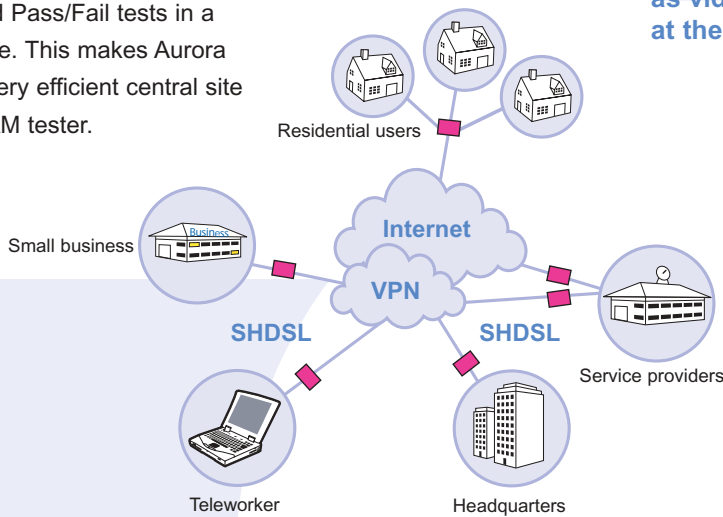
with a Single Keypress

Central Site Test

Service providers can verify applications like web hosting, Virtual Private Network services (VPN), Voice over DSL (VoDSL), or Remote LAN access (RLAN) at the central site.

For point-to-point data services Aurora Tango can emulate an STU-C until it achieves synchronization with the remote modem (STU-R).

When testing SHDSL, Aurora Tango can run a large number of automated Pass/Fail tests in a record time. This makes Aurora Tango a very efficient central site and DSLAM tester.



Aurora Tango can verify SHDSL services, such as video, net-gaming or voice over DSL, both at the central office and at customer premises

CPE Service Verification

Many applications fit in very well with SHDSL, replacing E1/T1 lines used currently for data, voice and video. However, migrating to SHDSL is not completely without risk. The Aurora Tango can replace the STU-R modem and start a layered check of the service.

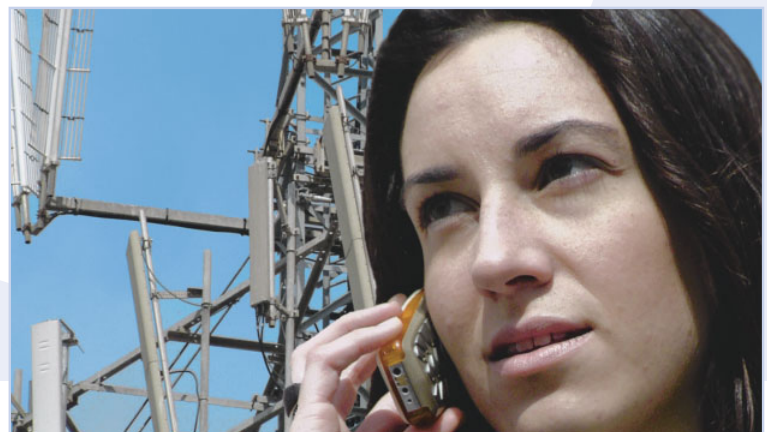
Tests such as user authentication (by means of PAP and CHAP), IP configuration via IPCP and DHCP, and IP test capability using Ping and Trace Route mean that you can test from the CPE right through to the ISP.

Next Generation Business

New telecom infrastructures required for such services as UMTS video streaming distribution are now possible using a copper pair with SHDSL technology.

These technologies, known as Inverse Multiplexing over ATM (IMA) and Multi-unit building market (MxU), open new horizons for the new telecom business aimed at office, residential and mobile users.

The Aurora Tango SHDSL can minimize time-to-market, reducing deployment costs by means of multilayer analysis, including data rate, SNR and SNM, and attenuation of the new multiplexed lines.



New technologies, such as IMA and MxU can be deployed to minimize time-to-market

All the Test Options

in Your Hands

Manual/Automatic

The Aurora Tango SHDSL module makes it easy to verify the copper loop. This is done by means of the key digital and analogue parameters that govern the SHDSL technology (for example, attenuation, SNR, SNM, data rate, error counters, event tracer).

Extended features include an advanced PDA-based user interface, a customizable test sequence for automatic tests and a complete file system for saving and restoring multiple SHDSL test results.

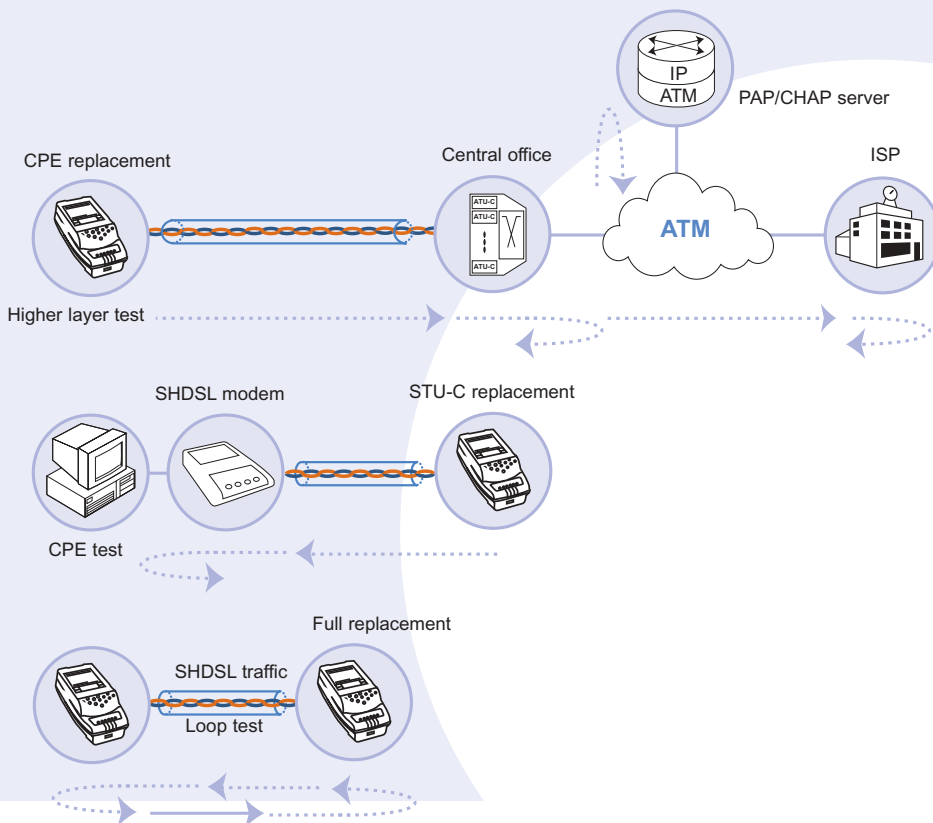
Manual tests are also very useful, especially if a problem persists, or if the technician wants to have full control over all the parameters of the SHDSL line.



Multi-Technology Platform

The Aurora Tango is a modular multi-technology platform for simple, fast and effective testing. Swappable modules offer the flexibility to test various technologies, including ADSL, SHDSL and ISDN.

- Full router and DSLAM replacement for SHDSL
- PPPoE and PPPoA statistics
- Address allocation and IP configuration using IPCP and DHCP
- Bridged and routed IP ping
- PAP or CHAP authentication
- Auto-retraining functionality in case of loss of synchronization



Effective Testing

A test suite can be defined in the Aurora Tango SHDSL, to be automatically executed to check hardware (CPE and central office), and higher protocol layers. The test ensures compliance with standards, inter-operability between DSLAM vendors, and full validation of the SHDSL line performance.

At Trend, we do not want to complicate the user's life, which is why we have made Aurora Tango very easy to operate, with clearly displayed results. This way, it is easy to check and identify the performance of the link, and quickly analyse the quality of the service.

Aurora Tango SHDSL can emulate a STU-C, an STU-R or both.

Trend Communications Ltd reserves the right to change the product specifications without prior notification. This document is for information only and does not represent a contractual obligation. It should be read with Trend's Aurora Tango brochure, reference 400615. All trademarks referred to are the property of their legitimate owners.



TrendCommunications Ltd.

Whitebrook Park
Lower Cookham Road
Maidenhead
Berkshire
SL6 8XY
United Kingdom

TrendCommunications

United Kingdom: 01628 503531

France: 01 69 35 54 70

Deutschland: 089 32 30 09 30

España: 93 300 3313

India: 11 25554161

Canada / Latin America: 1 256 461 0790

US Toll Free: 1 877 78TREND

Email: infoline@trendcomms.com

Web: www.trendcomms.com



A Subsidiary of IDEAL INDUSTRIES, INC.