

FlexaNetMVD

Monitoring Card for a MPEG-2/DVB Transport Stream

Interfaces

DVB ASI-C Serial Input

- Connector: BNC
- Levels: 200 mVpp ... 1Vpp
- Binary rate: 270 Mbit/s
- Impedance: 75 Ohms

DVB SPI (LVDS) Parallel Input

- Connector: DB25
- Levels: EIA/TIA-644 (LVDS)
- Signals: clock, valid data, packet synchronism
- Impedance: 100 Ohms

Clock

- Frequency: 27 MHz
- Accuracy: 5 ppm
- Stability: 1 ppm/year

MPEG Layer

- Analysis of 1 Transport Stream per card
- Supported packet size: 188, 204 and 208 bytes
- Automatic detection and configuration of packet size
- Simultaneous analysis of up to 256 PID's
- Analysis up to 54 Mbit/s of useful data (PES & PSI/SI tables)

Measurements

ETR 290 events

- Real time analysis
- Events:
 - 1. First Priority:** TS syn loss, Sync byte error, PAT error, Continuity count error, PMT error, PID error
 - 2. Second Priority:** Transport error, CRC error, PCR error, PCR accuracy error, PTS error, CAT error
 - 3. Third priority:** NIT error, SI repetition error, Unreferenced PID, SDT error, EIT error, RST error, TDT error
- Results: event counters and LED's indication

TS contents

- PSI tables contents analysis and SI tables identification
- Display of all services and tables carried by the TS as an intuitive hierarchical tree
- Bandwidth analysis: Transport Stream bit rate and bandwidth allocation per PID
- Indication of time interval between tables

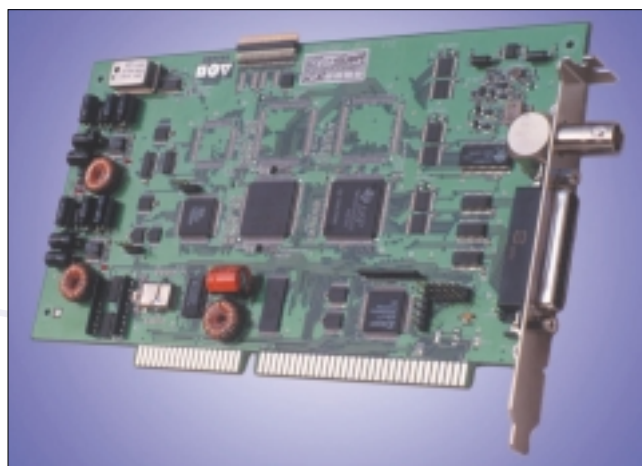
Timing analysis

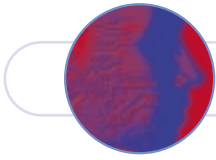
Parameters

- PCR Accuracy & Time Interval between PCR samples
- PCR impairments: analysis of PCR offset and PCR jitter
- Time interval between PTS samples

Results

- Accurate graphic representation: time plot and histogram
- Maximum and Minimum values





Relevant Standards

MPEG-2

- ISO/IEC 13818-1 (Systems), ISO/IEC 13818-2 (Video), ISO/IEC 13818-3 (Audio), ISO/IEC 13818-4 (Conformance), ISO/IEC 13818-9 (Real Time Jitter)

DVB

- EN 300 468 (DVB SI), TR 101 211 (DVB SI Guidelines), ETR 162 (Allocation of SI codes), TR 101 154 (Implementation Guidelines for the use of MPEG-2 systems), TR 101 290 (Measurement Guidelines for DVB systems), EN 50083-9 (ASI/SPI interfaces)

Safety and Environmental

- Storage ETS 300 019-2-1, Transportation: ETS 300 019-2-2, Operating ETS 300 019-2-7
- Temperature: Operating 0°C to +45 °C, Storage -25°C to +70°C
- EMC: Radiated and Conducted Emission EN55022, Immunity: EN55024
- Electrical Safety: EN60950



2522 - Trade Mark of the DVB Digital Video Broadcasting Project (1991 to 1996)

Ordering Codes

MVD	Monitoring Card 1 x MPEG-2/DVB Transport Stream
MVDM	Monitoring Card 1 x MPEG-2/DVB Transport Stream. Master type

Trend Communications Ltd
 Knaves Beech Estate
 Loudwater, High Wycombe
 Buckinghamshire HP10 9QZ UK

Trend Communications SL
 Pujades, 60
 08005 Barcelona
 España

infoline@trendcomms.com
www.trendcomms.com

International: ..+44 1628 524977
 UK:01628 524977
 España:93 300 3313
 Deutschland:089 32 30 09 11
 France:01 69 35 54 70
 India:22 8597 463/4
 US:256 461 0790

TrendCommunications Ltd reserves the right to change their product specifications without prior notification. This document is for information only and does not represent a contractual obligation.

A Member of the Telemetrix plc Group

