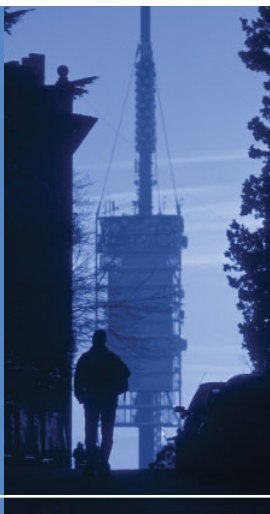


testing the world's networks



International Portfolio



TrendCommunications

Trend Communications is an international company supplying hand-held test equipment and on-line monitoring systems to the communications market.



Trend is part of IDEAL INDUSTRIES, and our sales and support teams reach more than 80 countries worldwide.

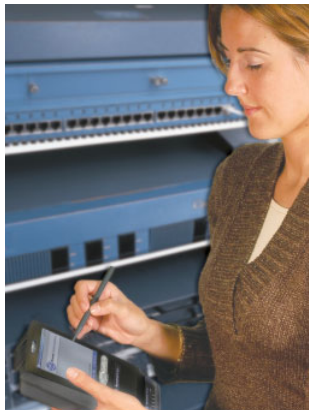
Trend's solutions are intended to cover any business based on broadband access, voice, datacom, network management, photonic transmission,

metropolitan and mobile networks.

Trend has always been at the forefront of the communications test market, and our strength is based on the robustness and high quality of our products. Our solutions combine excellence and high technology with ease of use, covering such technologies as xDSL, 3G/UMTS, FRL, ISDN, IP, Gigabit Ethernet, PDH, SDH/SONET and NGN.

This portfolio outlines our range of testing solutions available through our international sales network.

www.trendcomms.com



FlexaNet

FlexaNet is a family of system solutions that tests and monitors xDSL, transmission and video networks. It is based on Network Computing standards such as TCP/IP, SNMP, Java and SQL. All you need is an IP connection to make your workstation a Control Centre or to integrate into your OSS. FlexaNet is the ideal solution for verifying SLA targets, differentiating services, for maintenance, provision and for any task related to network auditing.

FlexaNetxDSL



FlexaNet xDSL is a cost-effective solution that provides full loop fault management for Control Centres supporting xDSL customers. Its remote testing capabilities include emulation of equipment at both central offices and customer premises, TDR, DMM, PSD, spectrum analysis, ATM, PPP, IP and higher level protocol testing.

FlexaNetTransmission

Provides continuous and real-time monitoring of SDH and PDH networks. Covers fault detection, non-stop performance monitoring (G.821,G.826, M.2100), alarm/error/performance trace, In-Service and Out-of-Service tests, as well as testing resources management.

FlexaNetVideo

This is a system that monitors MPEG-2/DVB streams (according to ETSI ETR 290) and synchronisation (PCR stability and jitter). It verifies that the service is transmitted properly between the Content Makers, Contribution Operators, Video Service Providers and final Clients.

AuroraTango

The Aurora Tango is a modular multi-technology platform for simple, fast and effective testing. It can operate in both One-button mode, using pre-defined parameters, and Expert mode. Adding a PDA provides a comprehensive graphical user interface. Swappable modules offer flexibility in testing various technologies.

AuroraTango SHDSL



This module enables verification of the copper loop by means of the key digital and analogue parameters that govern SHDSL technology (e.g. statistics, error counters, event tracer). Easy operation and interpretation of the results allow confirmation and identification of the link's performance and to analyse the quality of the promised service.

AuroraTango ADSL

The ADSL option is designed to assist Service Providers in the volume deployment of ADSL to residential and business customers. It enables verification of the copper loop by means of the key parameters that govern ADSL services. ADSL2 and ADSL2+ ready!



AuroraTango Gigabit Ethernet



This module has a comprehensive set of functions that help you to install and maintain links and services based on Gigabit Ethernet. The Gigabit Ethernet module provides a range of tests and measurements, such as RFC2544, top ten addresses, real-time Ethernet statistics and multi-layer BERT.

One or two bidirectional Gigaports for 1000BaseX or 1000BaseT transceivers support terminate, loopback and monitor of emerging network connections. An additional Ethernet port provides cable testing and enables basic legacy connection support.

AuroraTango ISDN

The Basic Rate ISDN test module provides facilities for installation, commissioning and low-level maintenance on the S and U interfaces, including S-bus monitor facility. With its fully automated configuration and test process, service characteristics can be verified quickly with a single key press. Aurora Profi and Aurora Expert are accessories available for BRI wiring verification and protocol analysis.

AuroraTango E1



Telecom and Datacom tester up to 2 Mbit/s with double analyser. G.703 balanced and unbalanced, V.11, V.24, V.35 and V.36 interfaces. All the features needed for in-depth analysis, from Pulse mask check to Jitter generation / analysis, including transfer and tolerance tests.

TrendObserver

Trend Observer is a combination of a protocol analyser for LAN, WAN, VoIP and wireless protocols. It operates in both local and distributed network environment. Cost-effective remote software probes, support for the monitoring of Ethernet switches, and excellent traffic trending Web-based reporting facilities complete the product.



AuroraPresto



Aurora Presto is a hand-held tester with multi-layer capabilities for testing Physical, xDSL, ATM, PPP, IP and application layers, such as Internet download testing. It provides all the functions needed to install, maintain and troubleshoot Asymmetric and Symmetrical Digital Subscriber Lines and services. Internal interface cards provide various modem types, data interfaces and DMM/TDR testing capabilities within one unit.

AuroraForte

A powerful and flexible tool for testing the Physical, ATM and IP layer operation during the commissioning, maintenance and trouble-shooting of ATM circuits. Provides connection to E1, E3, DS1, DS3, ATM25, STM-1/OC-3, STM-4/OC-12 and IMA. Physical and ATM BER testing are included. Aurora Forte can be used with Aurora Presto for multi-layer testing of xDSL. Advanced features, such as AAL support, F4 and F5 OAM, QoS, SVC support and IP Ping over ATM, higher protocol analysis and remote control, ideally suit Aurora Forte to 3G/UMTS Network testing.



VictoriaCombo

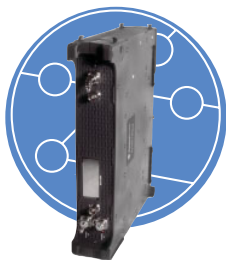


Victoria Combo is a future-proof platform for testing optical and metropolitan networks based on a truly modular and stackable architecture. To customize your equipment you can choose between a range of technologies and modules.

You can operate Victoria Combo out in the field by using its touch-screen and batteries, or indoors by using a keyboard or mouse and power supply. You can also manage the tester remotely from a computer via a TCP/IP wired or wireless connection.

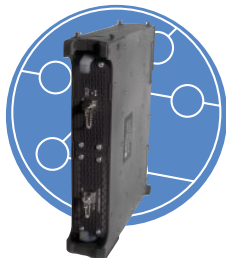
VictoriaCombo 2.5 G

Test module with optical and electrical interfaces up to 2.5 Gbit/s. Includes a comprehensive set of functions, such as TCM, APS, M/N alarms, G.783 sequences, Pointer events, G.82x, M.21xx, channel tests at E1/DS1 levels, frequency deviation and optical power measurement.



VictoriaCombo 10 G

Test module with 10 Gbit/s interfaces. Includes the same functions as the Victoria Combo 2.5 G, plus programmable frame capture to trace the evolution in the values of management information covered by the OH bytes.



VictoriaCombo NG



High-performance tool for testing Next Generation SDH/SONET up to 2.5 Gbit/s. All the features needed to speed up the installation and maintenance of new data-aware SDH networks in a compact, user-friendly battery-operated tester. This new test module enables you to test

Ethernet over SDH/SONET metropolitan networks that use Higher and Lower Order Virtual Concatenation, LCAS, GFP.

VictoriaSTM-16/OC-48

This is a touch-screen hand-held tester which includes all ETSI/ANSI interfaces up to 2.5 Gbit/s with functions such as TCM, APS, M/N alarms, G.783 sequences, frequency deviation and $n \times 64$ and $n \times 56$ kbit/s tests at E1 and DS1

levels. It can be remotely managed through a TCP/IP network. The standard model is upgradable to the Victoria Combo, and the Plus model includes all the Victoria SDH/ATM/IP functions.



VictoriaSTM-4/OC-12



This tester has the same specification as the Victoria STM-16/OC-48 up to 622 Mbit/s. It also includes ATM cell generation and analysis in concatenated VCs to verify 3G cell-based networks.

VictoriaSDH/ATM/IP



This tester has the same functions as the Victoria STM-16/OC-48 up to 155 Mbit/s. It has full ATM capabilities to fulfil the needs of the ATM and 3G/UMTS networks. It includes generation and analysis of ATM flows, QoS, OAM flows, generating and analysing AAL1, AAL2, AAL5, and also provides analysis of IP traffic composition. Victoria ATM/IP is a separate model that includes all the ATM and IP capabilities with SDH and SONET functions.

VictoriaSDH/SONET/PDH

This tester shares the features of the Victoria STM-16/OC-48 up to 155 Mbit/s. It can be remotely managed through a TCP/IP network.

The Victoria SDH/SONET Plus is upgradable by software to the Victoria STM-4/OC-12 model.



VictoriaJitter/Wander



This tester is a unique hand-held for clock impairment measurements. It is built on a Victoria SDH/SONET/PDH platform, adding real-time analysis and generation of jitter and wander according to O.171 and O.172. It can generate arbitrary modulations with graphical results by means of tolerance and transfer masks. Ideal for both transmission and synchronisation networks.

VictoriaNet Manager

Remote Control software which enables the Victoria testers to be controlled by a PC. Multiple connections are possible via a serial port, over modems, a LAN, a private TCP/IP network and even the Internet. Available for Victoria SDH/SONET/PDH, Victoria SDH/SONET Plus, Victoria STM-4/OC-12 and Victoria STM-16/OC-48.



VictorPlus



The Victor Plus is a hand-held analyser and generator for telecomms and data networks of 2 Mbit/s and below, with physical interfaces for G.703, V.11, V.24, V.35 and V.36. It performs in-service and out-of-service measurements.

AuroraDuet



The Aurora Duet, Trend's most advanced hand-held ISDN tester, offers a complete range of test levels, from simple installation testing to in-depth troubleshooting with its protocol analysis and protocol customisation features.

AuroraSonata

The Aurora Sonata is an all-purpose ISDN test tool for field technicians. Available in a Basic or Primary Rate only configuration or as a combined unit, it has all the capability necessary for technicians to identify almost any problem.



ALT2000



The ALT2000 is the tool for any physical qualification, monitoring or maintenance of copper pair subscriber loops used for today's transmission systems.

Its advanced features make it easy to use even by the non-expert for PASS/FAIL testing. Extensive test capabilities for voice and DSL make it attractive to the specialist needing a high-performance analyser. Ideally suited to qualification of xDSL circuits, it includes all the functions you need for copper loop testing.

AuroraExpert



The Aurora Expert is a powerful, easy-to-use protocol analyser for Aurora Testers, providing ISDN, V5, Frame Relay PPP and IP decode and analysis.



TrendCommunications Ltd
Knaves Beech Estate
Loudwater
High Wycombe
Buckinghamshire HP10 9QZ
United Kingdom

TrendCommunications

International: +44 (0)1628 524977
United Kingdom: 01628 524977
France: 01 69 35 54 70
Deutschland: 089 32 30 09 30
España: 93 300 3313
India: 022 28521059
Canada / Latin America: 1 256 461 0790
US Toll Free: 1 877 78TREND
Email: infoline@trendcomms.com
Web: www.trendcomms.com



A subsidiary of IDEAL INDUSTRIES, INC.