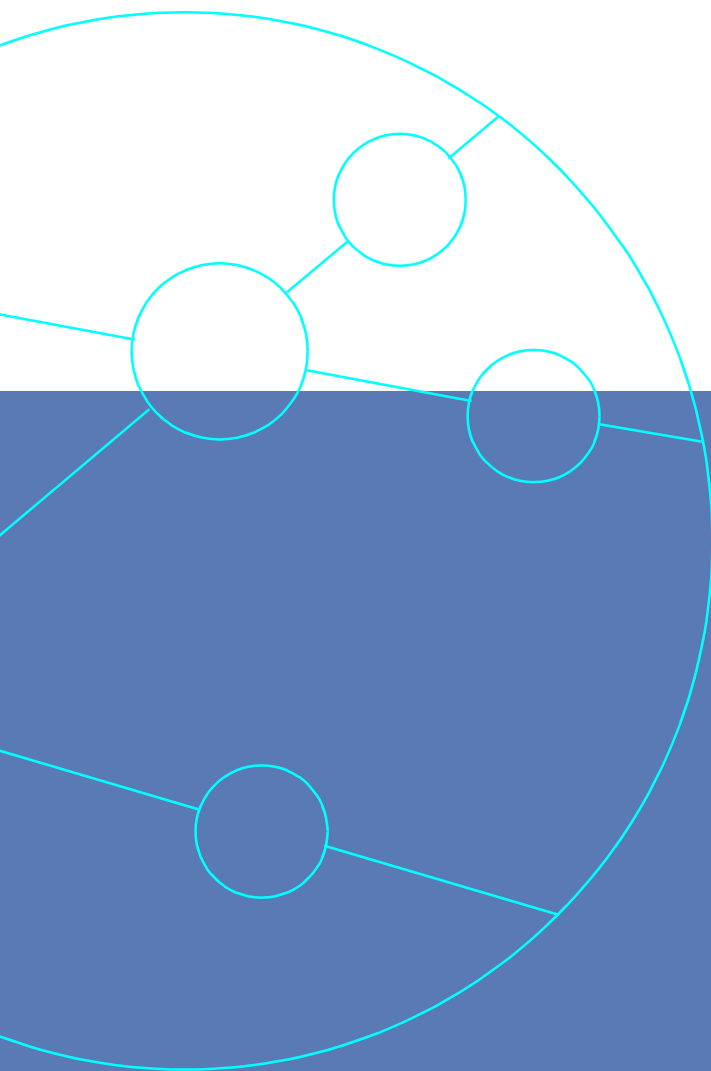


Aurora Forte PC Viewer Application

Operation of Aurora Forte with the PC Viewer application enables expert engineers to provide assistance to field staff without site visits, and to use the tester as a temporary network probe for monitoring links for performance analysis.

Application Note ANFORTE 13

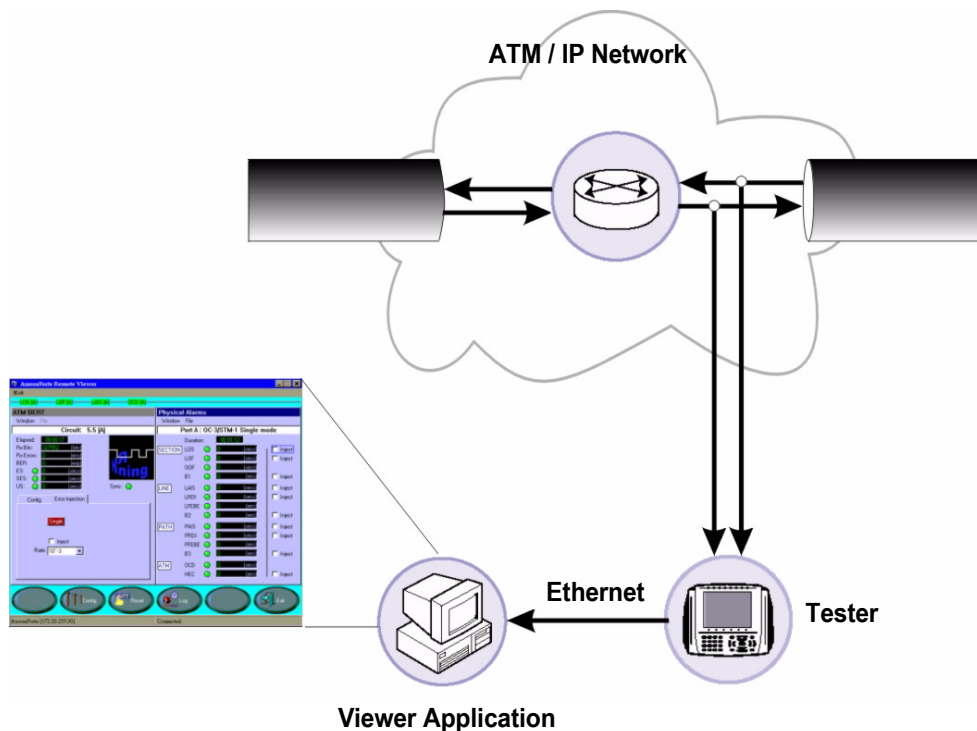


Testing the World's Digital Networks

TrendCommunications

USING AURORA FORTE AT REMOTE LOCATIONS WITH PC VIEWER APPLICATION

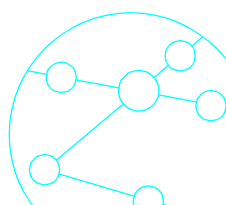
Operation of Aurora Forte with the PC Viewer application enables expert engineers to provide assistance to field staff without site visits, and to use the tester as a temporary network probe for monitoring links for performance analysis.



The PC Viewer application provides the same 'look and feel' as operating the tester as a handheld. This convenience will minimise the training time for engineers that will use the tester with its keyboard or with the remote Viewer. The wide range of test applications available on Aurora Forte means that a single product can be purchased for use as a commissioning tool, for fault finding and for equipment verification testing - thus reducing inventory costs.

Convenient local operation

Even in a laboratory the remote Viewer software has advantages. Instead of using the tester as a handheld unit, a PC can be used to control the tester which can be located with the ATM switch equipment in a separate room.



Remote expert knowledge

Field engineers may only have limited training on ATM protocol and may not have the experience of using some of the advanced functions available on Aurora Forte. An expert engineer can carry out detailed testing from the comfort of an office once the tester has been connected to the network. The advanced procedures on Aurora Forte can then be used to resolve network problems without needing to visit using large, heavy protocol analyzers that are not designed for field use.

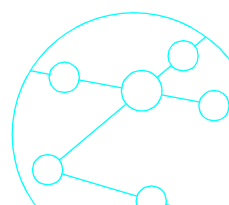
Probe for network monitoring

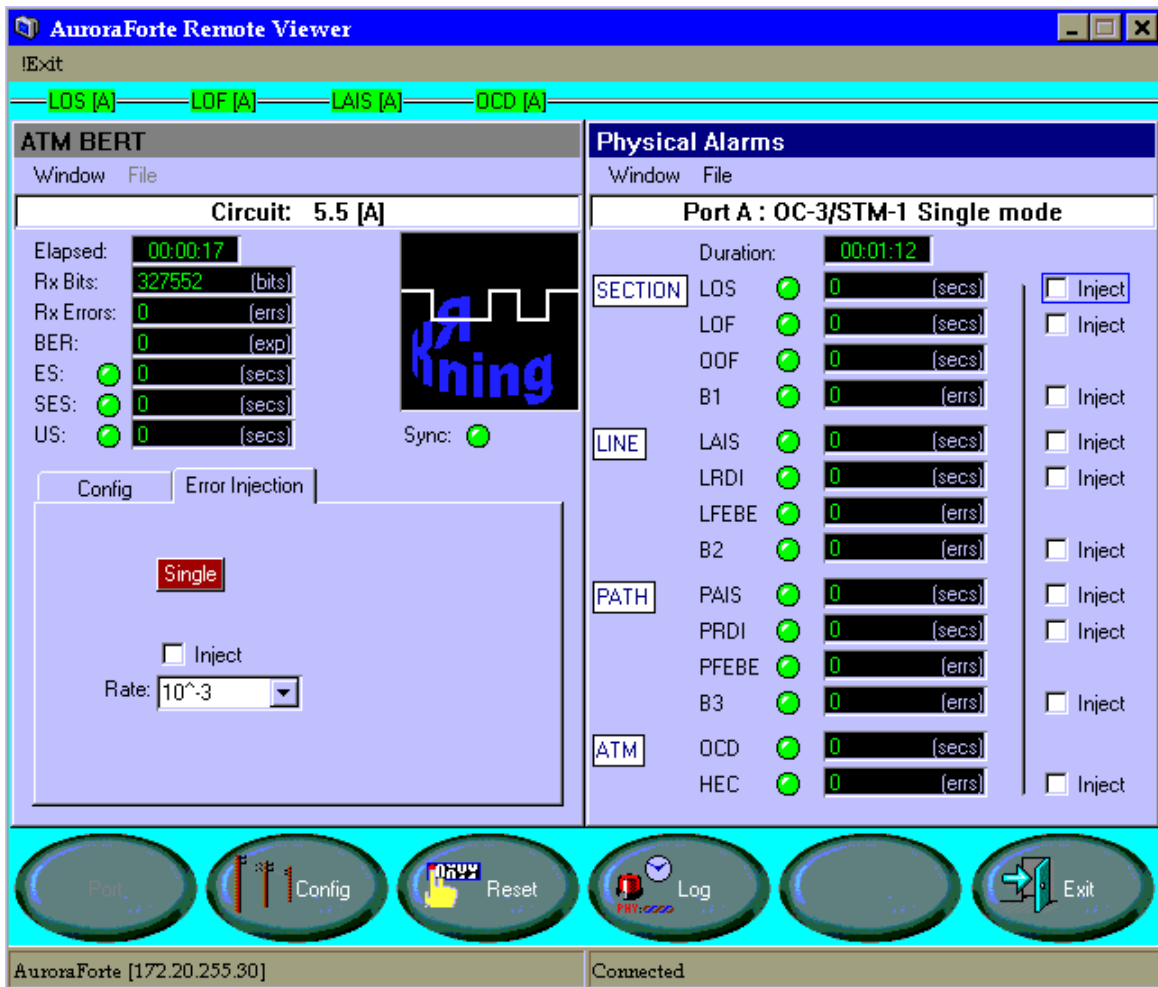
Aurora Forte can be installed temporarily at remote sites in order to monitor network performance whilst unattended. This mode of operation will be especially useful for 3G operators where equipment is being rapidly deployed and network traffic is unpredictable due to new subscriber loading. Aurora Forte can gather statistics on physical layer alarms and errors, ATM network loading, VCC data rate statistics and OAM protocol decode.

Remote Viewer operation

The remote Viewer application is launched on the PC as a windows application and connects to the remote tester via its Ethernet port. Operation over dial-up or other methods can also be achieved using commonly available adapters. The Ethernet messages that are used to communicate between the Viewer and remote tester use a relatively low data rate, so that operation over PSTN or mobile networks can be used for convenience without any significant impact on tester response time. A concern with remote operation is what will happen if the remote connection fails, for example the Ethernet becomes disconnected. In these circumstances the tester will automatically recover so that operation can continue without a need for an operator to reset it.

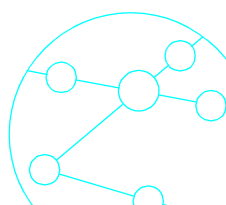
Internal batteries will allow the tester to continue to monitor a network if power at the remote site fails allowing alarms during power outage to be reported.





Typical Screenshot of Aurora Forte Remote Viewer Application

To prevent unauthorised use of the tester, or interference during a remote session, it is possible to set a password that stops local operation. A text window can be used to display owner contact information for convenience.



Aurora Forte

Aurora Forte is an ATM handheld tester with the key features of being multi-interface with a graphical user interface and providing physical, ATM and IP layer test routines. File Management System allows test results and configurations to be copied to/from a PC using the testers Ethernet port.

- Portable, battery powered, handheld unit, rugged design
 - Large high resolution colour display
 - Graphical ICON based window applications for easy operation of tests
 - Interfaces - combined E1 + E3, combined DS1 + DS3, ATM25,
 - OC3/STM1 (Single mode, Multi mode, G703, CAT5)
 - Bi-directional monitoring
 - Pass / Fail parameters for fast analysis of test results
 - Physical Frame and Alarm monitoring & Injection
 - Physical BERT for E1, E3, DS1, DS3
 - ATM VCC real time Traffic Scanning - up to 1024 VCC
 - ATM cellstream transmission - up to 256 VCC
 - ATM BERT
 - Quality of Service (O.191) measurement
 - Traffic Policing - to monitor and enforce a committed service level agreement
 - F4 and F5 OAM testing of ATM fault management layer (AIS, RDI, CC, Loopback), real time and trace history OAM cell capture with English language decode
 - IP ping over ATM - transmit and respond tests
 - SVC UNI 3.0, 3.1, 4.0 support with comprehensive Information Element editing
 - Management of results and configuration files via PC on Ethernet interface for simple operation
 - Software upgrades available from Trend Communications website, with download to tester via Ethernet port
- Aurora Forte is subject to an ongoing development program with continuous addition of new features - call for more information.



TrendCommunications

Trend Communications Ltd
Knaves Beech Estate
Loudwater, High Wycombe
Bucks HP10 9QZ UK
www.trendcomms.com
info@trendcomms.com

Trend Communications SL
Pujades, 60
08005 Barcelona
(Spain)

International: +44 1628 524977
España:..... 93 300 3313
Deutschland: 089 32 30 09 11
US: 256 461 0790

UK:..... 01628 524977
France: 01 69 35 54 70
India:..... 22 8597 463/4