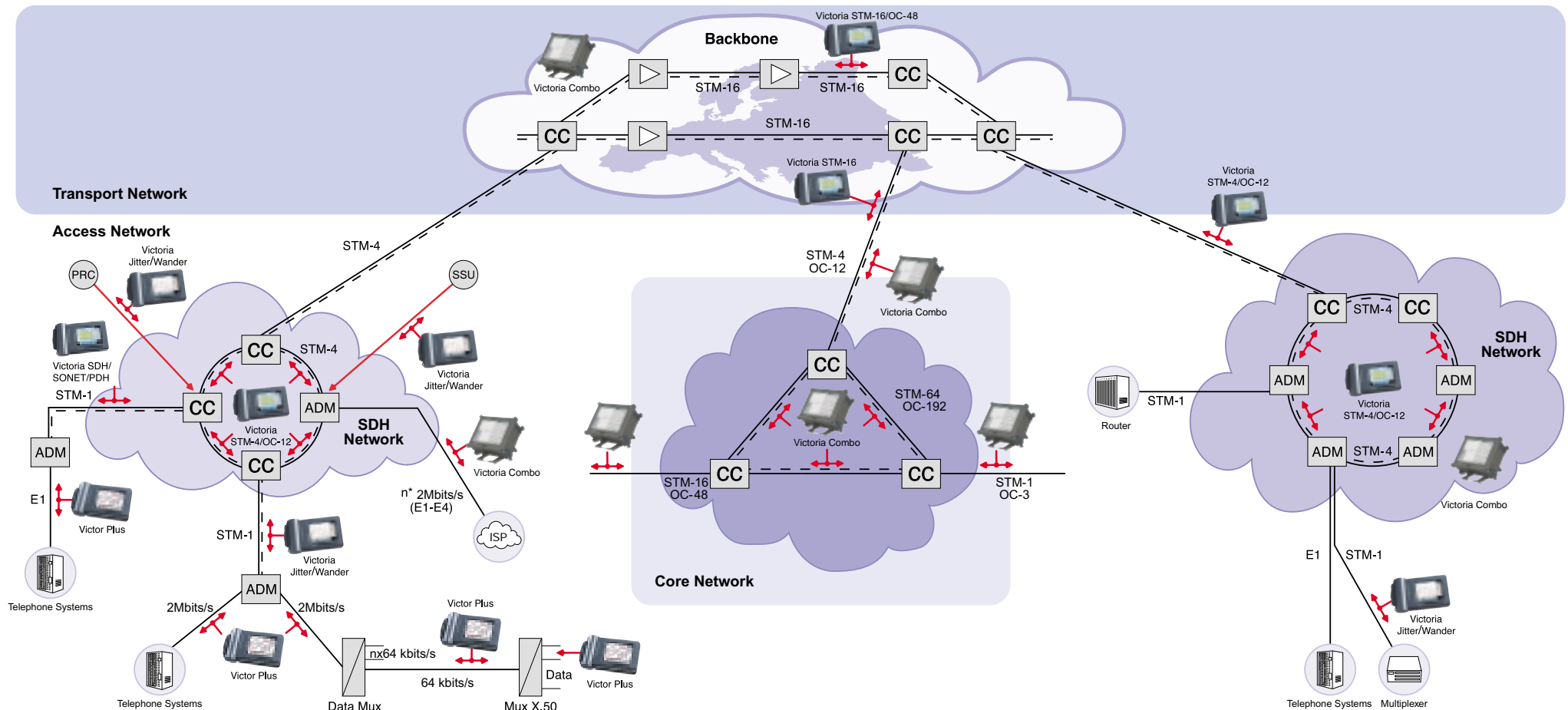




Trend and SDH, SONET, PDH, T-Carrier, Jitter and Wander



Victor Plus	Victoria SDH/SONET/PDH	Victoria STM-4/OC-12	Victoria STM-16/OC-48	Victoria Jitter/Wander	Victoria Combo	Legend
						<ul style="list-style-type: none"> SSU Synchronisation Supply Unit PRC Primary Reference Clock Out of Service Message In Service Message ISP Internet Service Provider CPE Customer Premises Equipment ES End System SR SDH Regenerator CC Cross Connect Working Line Protection Line ADM Add Drop Multiplexer
<p>This instrument is a hand-held analyser and generator for Telecomms and Data networks of 2Mbit/s and below with physical interfaces for G703, V.11, V.24, V.35 and V.36, it can perform In-Service and Out-Of-Service measurements.</p>	<p>This instrument is ideal for the installation, acceptance, bringing-into-service and maintenance of transmission networks operating up to 155Mbit/s (E1, E2, E3, E4, DS1, DS3, G.832, STM-0/STS-1, STM-1/OC-3). Features include: TCM, APS, RTD, G.783 pointer sequences, TIE and frequency measurements, BER in OH bytes, Path trace in J0, J1 and J2, G.821, G.826, M.2100, M.2101 performance, CAS signalling. Victoria SDH/SONET Plus is upgradable by software to the Victoria STM-4/OC-12 model.</p>	<p>Same specification as the Victoria SDH/SONET/PDH, with additional features necessary to handle interfaces up to 622Mbit/s. This model includes ATM cell generation and analysis in concatenated VCs to verify cell-based networks.</p>	<p>This instrument has the combined features of the Victoria SDH/SONET/PDH and the Victoria STM-4/OC-12 and, additionally, can handle transmission speeds of up to 2.5Gbit/s (STM-16/OC-48). Victoria STM-16/OC-48 Plus is a model that includes also all the Victoria ATM/IP features.</p>	<p>This instrument is built on a Victoria SDH/SONET/PDH platform, adding real-time analysis and generation of jitter and wander according to O.171 and O.172. It is able to generate arbitrary modulations with graphical results by means of tolerance and transfer masks. Ideal for both transmission and synchronisation networks.</p>	<p>Victoria Combo is a stackable platform for NGN, initially for SDH, SONET, PDH, DWDM and 10G Ethernet operating up to 10 Gbit/s. Victoria Combo can be controlled in three ways: using the touch-screen, on-site from a PC using a wireless connection or remotely over the internet using TCP/IP.</p>	