

# VictorPlus



## TrendCommunications

International +44 (0)1628 524977  
United Kingdom 01628 524977  
France 01 69 35 54 70  
Germany 089 32 30 09 30  
North and South America 256 461 0790  
Spain 93 300 3313  
India 022 8521059  
Email [Infoline@trendcomms.com](mailto:Infoline@trendcomms.com)  
Web [www.trendcomms.com](http://www.trendcomms.com)

## Telecom/Datacom

2 Mbit/s, nx64 kbit/s, VF, V.11, V.24, V.35 & V.36 in a single instrument



## VictorPlus *Interfaces*

● Handheld generator/analyzer: 2 Mbit/s, nx64 kbit/s, analog and data interfaces (DTE & DCE emulation):

G. 701 2 Mbit/s; unframed

G. 703 2 Mbit/s G. 704/ G. 732

n x 64 kbit/s within an E1 frame

n x 64 kbit/s G. 703 co-directional

Datacom

V. 11/ X. 24

V. 28/ V. 24

V. 35/ V. 24

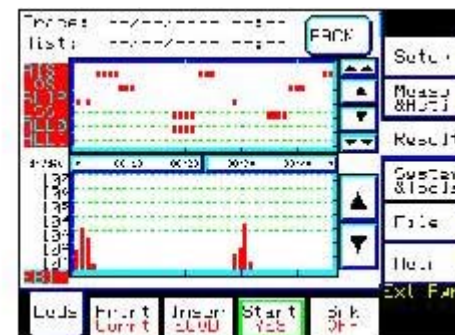
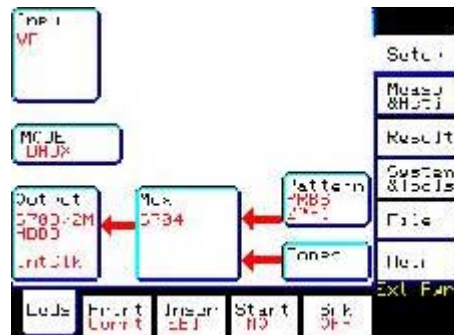
V. 11/ V. 24 (V. 36/ RS499)

Analog interface Tx/Rx RJ11



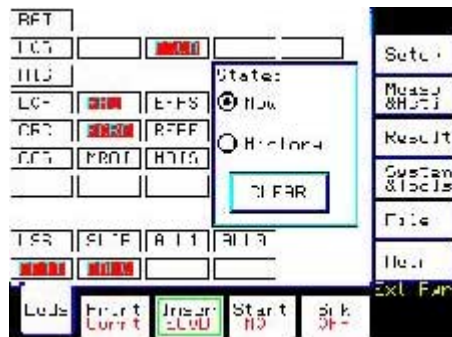
# VictorPlus *Features*

- BERT & Performance analysis according to G. 821, G. 826 & M. 2100
- Regenerator substitution, through-mode with high sensitivity (-38 dB)
- Analog Mux/Demux test, analog & digital interfaces in a single device
- VF tone generation and analysis: tone level and programmable frequency
- Through-mode with add/drop. Adding the signal received from a secondary input interface. Drop signal and transmit by a secondary output interface.



# VictorPlus *General*

- Intuitive and easy to use: GUI based on a touch-screen
- Large screen lets you view graphical results (time graphs and histograms)
- PC transfer or printing reports; CSV format provided
- SoftLEDs: quick and clear problem indication
- Up to 11 hours of autonomy with 2 NiMH battery packs



The screenshot shows a data table with the following columns: 'RS', 'Pat term', 'Tona', 'hou', 'Sec', 'TX', and 'Sutu'. The data is organized into several rows, with some cells containing numerical values and others containing text like 'Pat' or 'To'. A 'State:' menu is visible at the top right, with options 'Now' and 'History'.

RS	Pat term	Tona	hou	Sec	TX	Sutu
d	1	2	3	4	5	.
TX	To	Sec	To	Pat	To	To
8	9	10	11	12	13	14
Pat	To	Sec	To	Pat	To	To
16	17	18	19	20	21	22
INS	To	Sec	To	Pat	To	To
24	25	26	27	28	29	30
Pat	To	Sec	To	Pat	To	To

