

Monitoring on PRI and E1 links with Aurora Expert

Tracking problems through endless lines of protocol decode can be a time consuming and problematic task. Looking for an unusual and disconnect cause value to a particular terminal that may only happen once a week, may mean reading through hundreds or thousands of normal clear sequences before the fault condition is found.

Application Note ANE4W_1

```
Event 9 17:22:00.8
  Address = 255
  Control = 3
  FFP Protocol (hex) = 0021
  Link Control Protocol
  CONFIGURE ACK
  Identifier = 150
  Length = 15
  Authentication-Protocol
  Option length = 5
  Authentication-Protocol Challenge
  Magic-Number
  Option length = 6
  Magic-Number (hex) = 400068F5
  77020021
  02060007 03050223 05050640 0068F5

Event 11 17:22:00.8
  Address = 255
  Control = 3
  FFP Protocol (hex) = 0223
  Challenge Handshake Authentication Prot
  Identifier = 191
  Length = 20
```

Testing the World's Digital Networks

MANIPULATING AND FILTERING LARGE PROTOCOL TRACES

Isolating complicated protocol problems - Exception Filtering on AuroraExpert

Tracking problems through endless lines of protocol decode can be a time consuming and problematic task. Looking for an unusual and disconnect cause value to a particular terminal that may only happen once a week, may mean reading through hundreds or thousands of normal clear sequences before the fault condition is found. It may even be possible to miss the fault condition due to the sheer amount of trace information stored.

Now added to the extensive filtering options within AuroraExpert is the ability to exclude certain conditions and logically mix these filter settings with other stored filters on wanted or unwanted trace detail.

Figure 1 shows the new filter set-up screen where each filter may be set up as a condition to 'Include' or 'Exclude' from the protocol trace decode.

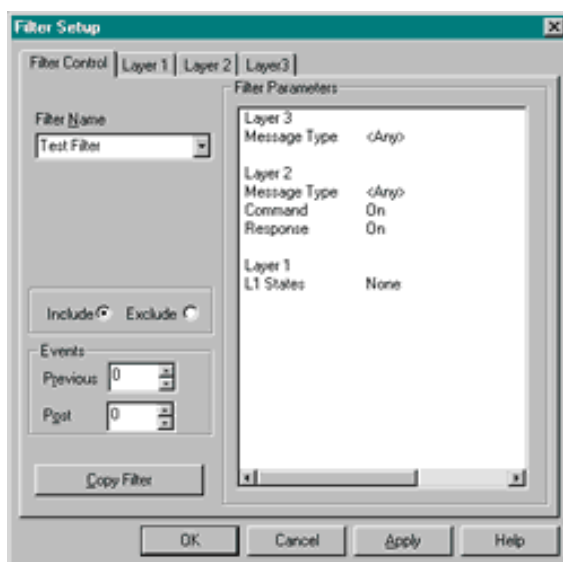
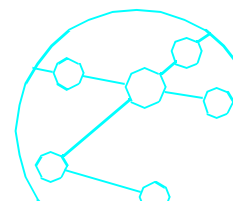


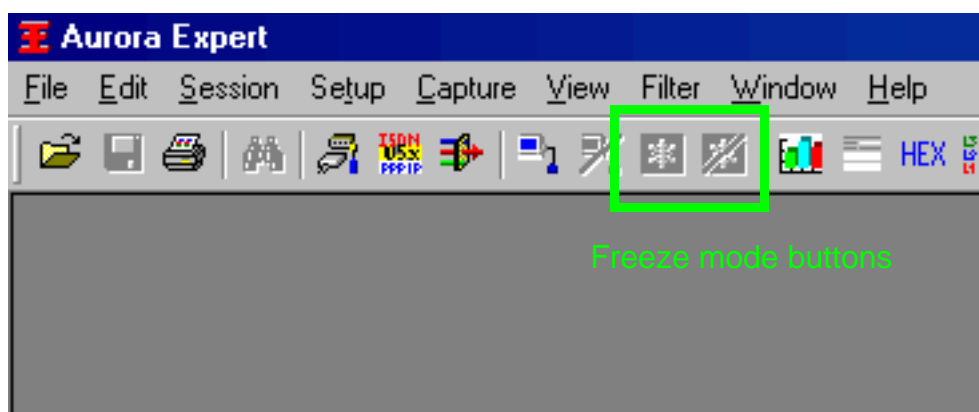
Figure 1

New Filter setup screen



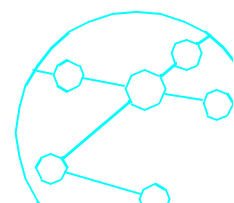
Reviewing real-time traces 'on the fly' - Freeze Mode on AuroraExpert

When observing a real-time protocol decode trace it is often a requirement to pause and review information that appears on the screen while continuing to capture the live protocol decode to the PC hard disk. This can be particularly important when looking for abnormal clearing codes or particular call set-up problems on a busy interface.



Freeze mode is provided on auroraExpert allowing the real-time trace to be paused (frozen) and reviewed simply by pressing the 'freeze' button (see figure 2) and scrolling through a user defined review buffer. Once paused, the screen trace may then be re-started by pressing the 'un-freeze' button. Normal real-time trace viewing is then restored. All trace data is captured to the PC hard-disk while freeze and review mode is active. The number of messages held in the freeze mode review buffer defaults to 30 messages but this number can be adjusted to fit the user requirements.

The functionality detailed above is available in the latest release of Aurora Expert software. Please contact your Local Vendor or the Trend Communications Ltd Customer Support Hotline (tel: +44 1628 851085) for further information.





TrendCommunications

Trend Communications Ltd
Knaves Beech Estate
Loudwater, High Wycombe
Bucks HP10 9QZ UK
www.trendcomms.com
info@trendcomms.com

Trend Communications SL
Pujades, 60
08005 Barcelona
(Spain)

International: +44 1628 524977
España:..... 93 300 3313
Deutschland: 089 32 30 09 11
US: 256 461 0790

UK:..... 01628 524977
France: 01 69 35 54 70
India:..... 22 8597 463/4